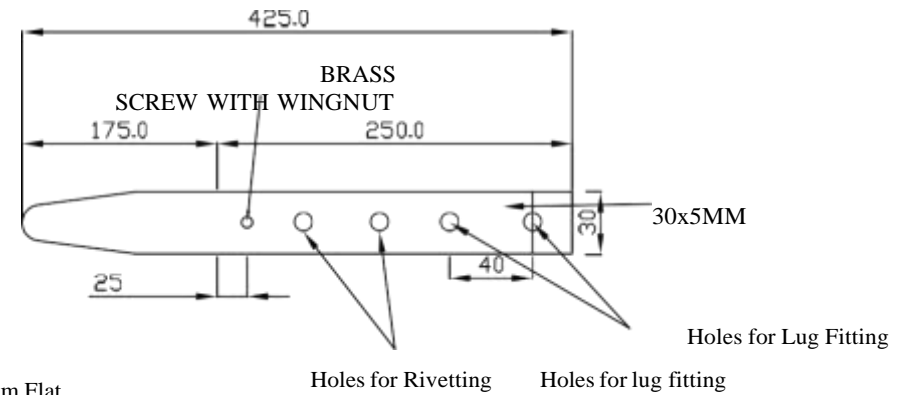
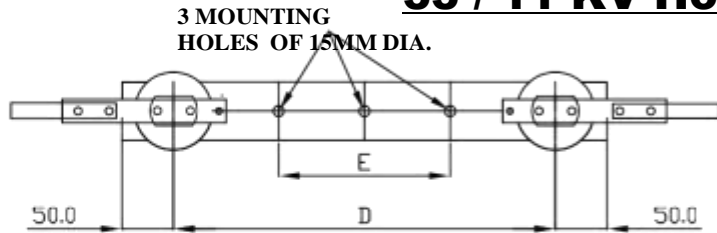
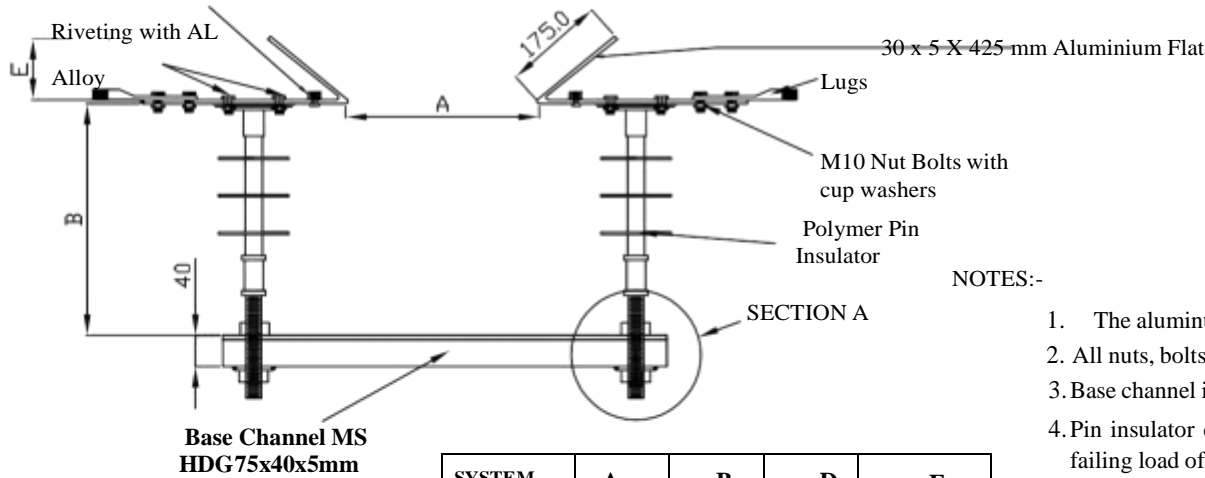


33 / 11 KV Horn Gap Fuse



BRASS SCREW WITH WING NUT WITH FLATTENED END

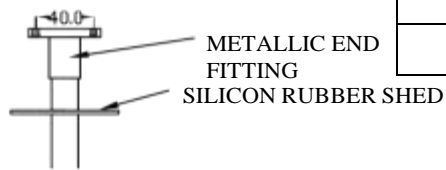
ELECTRICAL GRADE ONE PIECE, AL. FLAT STRIP



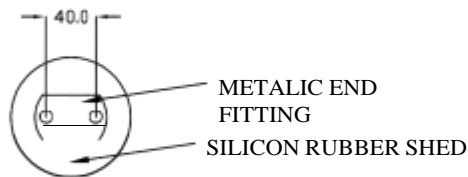
NOTES:-

1. The aluminum strip 30x5mm for hg & connector.
2. All nuts, bolts, washers, flat, rod are hot dip galvanized.
3. Base channel is hot dip galvanized.
4. Pin insulator conforms to iec 61109-2008 (amended up to date) & shall have minimum failing load of 5kn for 11kv and 10kn for 33kv.
5. The end fittings of insulator shall be made of spheroidal graphite cast iron or malleable cast iron or forged steel or aluminum alloy
6. The wing nut shall not fall down & the end of bolt should be flat ended & are of brass.
7. All dimension are in mm
8. Tolerance is as per relevant IS
9. In Case of any Discrepancy Please contact CE, P&P Wing KPDCCL

SYSTEM VOLTAGE	A (MM)	B (MM)	D (MM)	E (MM)
11KV	225	325	480	150
33KV	375	700	675	150



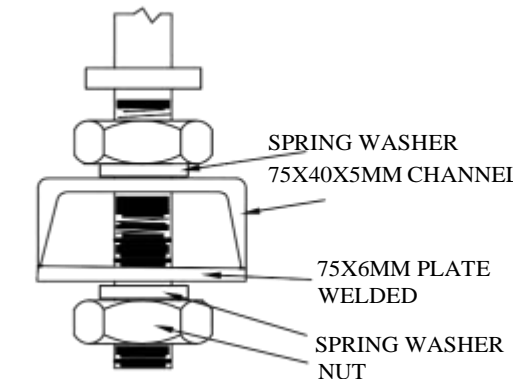
FRONT VIEW



TOP VIEW

PIN INSULATOR TOP END FITTING ASSEMBLY

Date of Issue: - 30-04-2022



ENLARGE SECTION-A

Kashmir Power Distribution Corporation Limited

Tender drawings subject to modifications by the owner as per field requirement. Contractor has to submit his drawings after award of contract for approval of the owner

General Arrangement Drawing for 33 / 11 KV Horn Gap Fuse	Drawing No. CE/P&P/Drg / 2022 /11kv HFG001 (Sheet 1 of 1)
--	--